

1379 Subscribers!

252 Members Strong!

[boisebasinquilters.org](http://boisebasinquilters.org)

June 2023

VOLUME 38 ISSUE 5



# Boise Basin Quilters, Inc.

**Mission Statement and Purpose:** Contribute to the growth and knowledge of quilting, quilting arts, and the history of quilting; provide educational and social opportunities to its members; offer quilt-related classes to youth and adults in the community; create and donate items for the health, welfare, and comfort of the community through Guild Outreach activities.

2-5

MEMBERSHIP

6

MEETING ACTIVITIES

7-13

QUILT SHOW

14

SCHOOLHOUSE

14-16

COMMUNITY OUTREACH

17

COMMUNICATIONS

18-20

GUILD HISTORY

21-26

ADVERTISEMENTS

**OUR NEW WEBSITE IS LIVE!!!**



**BOISE BASIN QUILTERS GUILD**

MEMBER LOG IN

[HOME](#) [ABOUT US](#) [COMMUNITY OUTREACH](#) [QUILT SHOW](#) [SHOW AND TELL](#) [LINKS](#) [MEMBER ONLY](#) [CONTACT](#)

## FOR CURRENT MEMBERS ONLY

1. Go to: <https://www.boisebasinquilters.org/current-member-signup/>

Use the password: signup

2. Please make sure the title on the page reads "Protected: Current Member Signup."

3. Once your profile is complete, click the "Update Profile" button at the bottom of the page and log out.

Update Profile

4. The next time you log in, you will be taken to the typical log screen where you can upload a photo of yourself that will appear in the member directory.

If you have any problems completing your profile or uploading your profile photo, don't hesitate to send an email to [website@boisebasinquilters.org](mailto:website@boisebasinquilters.org). We will be happy to help.

## GUILD MEETINGS

### WHEN

7:00 p.m.  
3rd Thursday of each month,  
except July and December.

### WHERE

Boise Church of Christ  
2000 North Eldorado St.  
Boise, Idaho. ([map](#))

The church Fellowship Hall is open at 6:30 pm for members and guests to visit all the activity tables including our extensive library.

[Upcoming Events](#)

## Meeting Activities

## Fat Quarter Exchange

Contribute a Fat Quarter at the general meeting, with the chance to win the whole stack!

What is a Fat Quarter? Click [HERE](#)

June  
July  
August  
September  
October  
November

Patriotic  
*No meeting*  
Fish and Wildlife, Forest  
Christmas in September  
Stripes and Dots  
Black and White

**QUESTIONS? Contact: Mona Harp**  
[membership@boisebasinquilters.org](mailto:membership@boisebasinquilters.org)



Image by vector4stock on Freepik

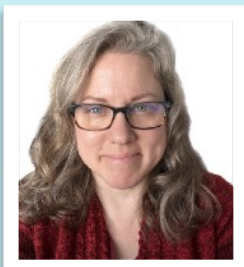
## PHISHING ALERT!!

If you get an email from the BBQ president or any BBQ email asking you to make a purchase, send money electronically or anything of the sort, **delete it and do not click on any links** in the email. We will not ask members to do that sort of thing by email.

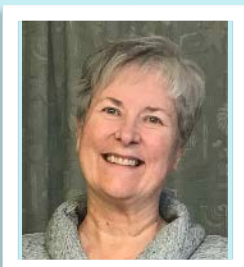


## Sneak Peek Inside!

- Page 6** Explore the inner world of an Ebay (quilt) addict!
- Page 9** First Come, First Served! Over 187 Volunteer spots were served at last year's quilt show! The sign up link is now LIVE!!
- Page 10** A whole new Vendor Hall is opening for our quilt show! Get the scoop!
- Page 21** The NEW Stories to Stitches Small Group held its first meeting on May 25! What is their first book? Check it out!



**Amanda Bruesch**  
President



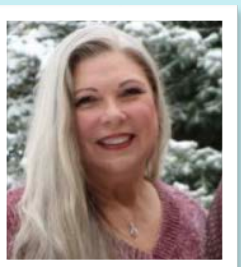
**Vicki Francis**  
Vice President



**Carol Bearce**  
Secretary



**Janice Atkins-Neva**  
Treasurer



**Jennifer Price**  
Quilt Show Chair

## 2023 Boise Basin Quilt Guild Officers

## Board Members

### ELECTED OFFICERS

**President:** Amanda Bruesch

**Immediate Past President:**

Jennifer Price

**Vice President:** Vicki Francis

**Recording Secretary:**

Carol Bearce

**Treasurer:** Janice Atkins-Neva

**Quilt Show Chair:** Jennifer Price

**Immediate Past Show Chair:**

Carol Bearce

### QUILT SHOW

**Quilt Show Vice Chair:**

Stacy Spaulding

**Quilt Take-in:** Joann Hopkins

**Admissions:** OPEN

**Quilt Show Secretary:**

Darlene Wallis

### COMMUNICATIONS

**Facebook:** Darlene Wallis,

Debbie Haumesser,

Darci Mead

**Instagram:** Brice McLaughlin

**Newsletter:** Vicki Francis,

Brice McLaughlin

**Photographer:** Vicki Francis

**Publicity:** OPEN

**Corresponding Secretary:** OPEN

### COMMUNITY OUTREACH

**Chair:** Mary Panzer

**Education Outreach:** OPEN

**Inheritance:** OPEN

**Quilts for Kids:** OPEN

**Special Projects:** OPEN

### MEETING ACTIVITIES

**Chair:** Diana Stewart

**Block of the Month:**

Jennifer Price, Darlene Wallis,

Sandy Dohse

**Door Prizes:** OPEN

**Fat Quarters:** Mona Harp

**Library:** Marty Marzinelli

**Meet and Greet:** Diana Stewart,

Linda Jolly, Susan Peterson

**Show and Tell:** Sharon Culley

### MEMBER EDUCATION

**Programs:** Lynne MacDonald

**Schoolhouse:** Janice Black

**Equipment:** OPEN

### MEMBERSHIP

**Chair:** OPEN

**New Member Social:**

Amanda Oros

**Small Groups:**

Janice Atkins-Neva

### TECHNOLOGY

**Chair:** Darci Mead

**Website Manager:** Darci Mead

**Content Manager:** Linda Sturm

**Gallery Manager:** Vicki Francis

**E-Mail Manager:** OPEN

**Document Storage:** Darci Mead

**Equipment Manager:** Darci Mead



Wednesday, June 14

6 PM Alchemist Coffee

2701 W. Stewart Ave

Boise, Idaho 83702

**RSVP:** Amanda Oros at [oroscrochetgold@gmail.com](mailto:oroscrochetgold@gmail.com)

## New to BBQ?

We have an event just for you!

Our New Member Social is a time for you to meet other new members, learn about the guild and ask your burning questions! Choose a location and date that works for you and RSVP to Amanda Oros. The best part, your drink/snack is on us!

Wednesday, June 21

6 PM Lucky Perk Coffee

1551 W. Cherry Ln #101

Meridian, Idaho 83642

## 2023 Membership Dues Renewal

Payment of 2023 Membership Dues were due by the end of December 2022. If you have not yet paid or renewed your dues for 2023, your membership has been inactivated. However, if you would like to remain a BBQ member, please forward your payment as soon as possible.

Print the activation form and mail it along with your check to:

Boise Basin Quilt Guild,

PO Box 4434, Boise, ID 83711-4434

Or bring the form and check to our next meeting.

Remember, your dues are pro-rated.

Current fees are \$26.25 to remain active through 2023.

**Please renew as soon as possible to remain active in the Guild for the 2023 calendar year.**

### QUESTIONS?

## NEED MEMBERSHIP ASSISTANCE?

One-time-use funds are available for membership dues if you need help. These funds are also available for the SchoolHouse classes or kits. All requests are kept confidential.



For information contact

[membership@boisebasinquilters.org](mailto:membership@boisebasinquilters.org)

[schoolhouse@boisebasinquilters.org](mailto:schoolhouse@boisebasinquilters.org)

## GIVE A GIFT?

Have you thought about giving a membership or a Schoolhouse class and or kit?

Gift certificates are available.





## HELP WANTED QUILT JUDGES

**No experience necessary!! Will train!**

**We know that you can quilt! Come learn how to judge and join the quilt judging team at the Fair! Why?**

Learn what judges look for and why

Gain knowledge that may improve your own quilting

Get to examine other quilts up close and personal

Get a close up look at what regional quilters are creating

**NEEDED:**

6-8 JUDGES

**WHEN:**

JUDGING DAY Wednesday, August 16

8:00 a.m. - early afternoon

TRAINING DAY—TBA (will be one day in week prior to the Fair)

**STIPEND:**

\$65 plus lunch plus 2 Free tickets to the Fair!

**WHERE:**

Expo Idaho



**ARLENE ANKENMAN**

**HOME ARTS SUPERINTENDENT**

**Contact:**

[akatrudy@hotmail.com](mailto:akatrudy@hotmail.com)

**Western Idaho Fair**

5610 Glenwood St.

Boise, Idaho 83714

[Get directions»](#)

[\(208\) 287-5650](tel:(208)287-5650)

[info@idahofair.com](mailto:info@idahofair.com)



**Vicki Francis Designs**



**TRAINING PROVIDED BY Vicki Francis**

**Candidate: National Association of Certified Quilt Judges**

**Vicki Francis Designs LLC**

For training questions CONTACT: [vickannie4@gmail.com](mailto:vickannie4@gmail.com)

**\$\$\$ Want to help but not interested in judging? \$\$\$**

Positions open from August 14-29 assisting with quilt entries, moving quilts during judging process, supervising exhibition area, etc. \$11 an hour for first timers! Contact Arlene [HERE](#).

**Interested in entering a quilt in the Fair? Click [HERE](#)**

Yes! You can enter your own quilts and still be a judge.

You will not be judging your own quilts!

**TrimsOnWheels.com****!!!Always Great Deals!!!**

For a reward of \$20 off your next order, go to [JOYOFCREATING.BIZ](http://JOYOFCREATING.BIZ) for a 2 or 3 minute survey for a reward of \$20 off your next order, whether on [trimsonwheels.com](http://trimsonwheels.com) or during a personal or group Zoom presentation with me.

**Luc**  
[trimsonwheels.com](http://trimsonwheels.com)  
**Trims On Wheels, Inc.**  
**P.O. Box 129**  
**Hillsdale, WY 82060**  
**Edie: 415-509-1891**  
**or Luc: 415-609-1891**

**QUILTFOLK MAGAZINE AND SHOPPING 15% DISCOUNT**

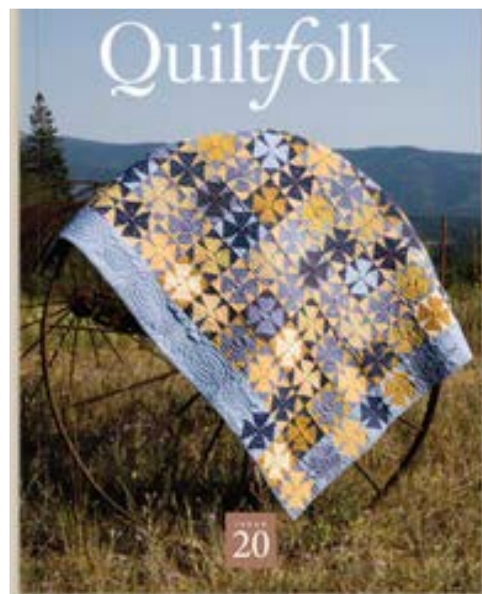
BBQ is participating in the "Guild Program" with the magazine "QuiltFolk." We've joined over 350 guilds across the country being listed in their online guild locator to make it easier for folks to find us (and find other guilds!) Check it out!

<https://www.quiltfolk.com/guilds/>

**Best of all**, they've created a custom coupon code for guild members to use on their website! The code can be found on the Members Only/Discount page of our BBQ website:

<https://www.boisebasinquilters.org/members-only/>

As part of this program, we will receive two free copies of each new quarterly release that will be used in our door prize activity at the general meetings to especially recognize the committee chairs and members.

**BBQ MEMBER BENEFITS**

- Presentations/workshops by national and local artists
- Access to a secure website for a printable newsletter
- An up-to-date online membership directory
- Entry of quilts in our annual quilt show at a discount
- Free access to an extensive print library with books, patterns, and templates
- Inclusion in a variety of Guild projects and activities
- Affordable classes for beginning to advanced quilters
- Free downloadable block patterns

**For additional membership information, please email:**

[membership@boisebasinquilters.org](mailto:membership@boisebasinquilters.org).

**Quilting and Sewing Supplies 20% Discount**

[www.sewingbysarah.com](http://www.sewingbysarah.com) is a quilting and sewing website, providing our members with a 20% discount on all purchases.

The discount code can be found on the Members Only/Discount page of our BBQ website: <https://www.boisebasinquilters.org/members-only/>

If you purchased your notions on this site, Boise Basin Quilters guild will receive 5% of every sale using this discount code.



**KEYNOTE SPEAKER**  
**LYNNE MACDONALD**

**“CONFESSIONS OF AN EBAY ADDICT  
(OR, THE ONLY CURE IS TO  
NEVER SIGN IN AND TAKE A LOOK)”**

**JUNE 15**  
**GENERAL MEETING 7PM**  
**AT BOISE CHURCH OF CHRIST**



Lynne MacDonald will take you on a show-and-tell journey of the fruits of her three-year-long buying binge of vintage and antique quilts in the dangerous waters of eBay-world.

She will share with you the lovely quilts, tops, fabrics, blocks, embellishments, etc., etc., etc., that captured her eye and tapped her savings account.

Please come and admire with her the artistry and makers skills of our quilting sisters (perhaps a brother or two???) of earlier years.

You are encouraged to come up during the break and pet the quilts and ooh and ahh over the amazing fabrics. Lynne asserts that she has been largely eBay-free since April 2018 (with the exception of occasional foraging for vintage Japanese fabrics at less shocking prices).

**[Mandatory warning: looking at these quilts and touching the fabrics may prove to be harmful to your mental health, place you at risk of an eBay addiction, and ultimately prove fatal to your pocket book.]**



Image by mamewmy on Freepik





# 2023

**Boise Basin Quilters Guild**

**Ruby Jubilee**

# QUILT SHOW

**Friday, September 29th**

**Saturday, September 30th**

10:00am to 5:00pm

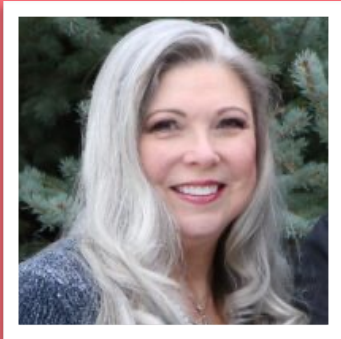
Hundreds of Quilts,  
Live Demonstrations,  
Shopping, and More!

**Expo Idaho**

**5610 Glenwood - Boise, Idaho**

Tickets + Information at  
[BoiseBasinQuilters.org](http://BoiseBasinQuilters.org)





**QUILT SHOW COMMITTEE  
CHAIR  
JENNIFER PRICE**

**[QUILTSHOW@BOISEBASINQUILTERS.ORG](mailto:QUILTSHOW@BOISEBASINQUILTERS.ORG)**



**At the next guild meeting, June 15th, please visit the Quilt Show Table to pick up bookmarks, flyers, and posters.**

It would be wonderful if we can all ask our:  
hair salons



nail salons  
jewelry shops  
coffee shops  
dentist offices



any other businesses that we visit

if they would put up a poster for us. Many times grocery stores will have a customer bulletin board we could post a flyer on.

Maybe share bookmarks with your church's quilting group, other small quilting groups, or even your neighbors. Word of mouth is the best way to share the news about our upcoming Quilt Show. **We want everyone who would be interested in our show to know about it before it happens, and not miss the chance to see all the quilts and vendors that will be at our Quilt Show.**





## Time to Schedule Volunteers!

The time has come for you to look at your calendars and decide which duties you want to perform to make this the best quilt show ever for the Boise Basin Quilters Guild's RUBY JUBILEE.

Last year we filled 187 volunteer spots that made our show successful.  
There are openings for everyone again this year.

You may sign up using the "Sign Up Genius" link below OR I will have the list available at the June meeting for you to choose your best times and locations to volunteer.

All slots are first come, first serve, so it would be to your advantage to sign up now.

Even if you have "always done a certain task,"  
it helps the committee if you remind us of what your preferences are.  
So please sign up on the link below.

Remember each day you volunteer offers you free admission for that day!



I am excited about working with you as we prepare for this amazing event.

If you have questions, contact me at:  
Barbara Splaine, Volunteer Coordinator  
Contact: [qsvolunteers@boisebasinquilters.org](mailto:qsvolunteers@boisebasinquilters.org)

CLICK BELOW TO SIGN UP!





## MERCHANT MALL VENDORS

BOISE BASIN QUILTER'S GUILD

There is vendor space available at our 2023 Quilt Show!

**The Merchant Mall for our vendors was a  
huge success in 2022!**

Thanks to all of you for your participation!

**AND WE ARE OPENING UP MORE SPACE FOR VENDORS!**  
(Vendors do not necessarily have to be sewing related.)

If you come across a vendor who is interested  
in being a vendor at our show, please obtain their:

name

phone number

email

Send that information to  
Kim Severns, BBQ Quilt Show Vendor Coordinator,  
at [qsvendors@boisebasingquilters.org](mailto:qsvendors@boisebasingquilters.org)

OR

Send them to:

<https://www.boisebasingquilters.org/quilt-show/merchant-mall-vendors/>

- [Vendor Invitation](#)
- [Vendor Guidelines](#)
- [Vendor Registration Form](#)

**\*\* Vendor Deadline: Registration Must be Received  
no later than August 17, 2023\*\***





**For the Guild's Ruby Jubilee, we plan to feature the quilting  
of Charter members  
at our "Featured Quilters" exhibition!  
Over the years some have passed on or moved away.**

**We are asking current members to forward information that will allow us to contact these  
Charter members. Please send information to:**

**Jennifer Price, Quilt Show Chair at [quiltshow@boisebasingquilters.org](mailto:quiltshow@boisebasingquilters.org).**

Anderson Laubenheim,  
Peggi  
Barrett, Pat  
Beaty, Beverly  
Bragg, Cherrie  
Collar, Leila  
Duerr, Peggy  
Duvall, Doris  
Fisher, Shirley  
Gilbert, Marie  
Gillespie, Margaret  
Hokenson, Peggy  
Howard, Linda  
Jones, Pam  
McClendon, Peggy  
Morris, George Ann  
Morthland, Shirley  
Mueller, Gretta  
Partee, Cherry  
Riddlemoser, Jacque  
Sams, Georgia  
Scott, Evelyn  
Szarzynski, Cyndy  
Turner, Virginia  
VanValkenburgh, Elaine  
Walter, Chris  
Weinberg, Karen



Categories	Award	\$ Prize
Best of Show		200
Best Hand Quilting		100
Best Track Quilting Freemotion		100
Best Machine Quilting Stationary/Domestic		100
Best Machine Quilting Computerized		100
Best Ruby Jubilee Quilt		100
Judge's Choice		
Judge's Choice		
100 Workmanship	1st	100
100 Workmanship	2nd	50
100 Workmanship	3rd	25
100 Workmanship	HM	
100 Workmanship	HM	
200 Small Pc'd by One	1st	100
200 Small Pc'd by One	2nd	50
200 Small Pc'd by One	3rd	25
200 Small Pc'd by One	HM	
200 Small Pc'd by One	HM	
300 Small Pc'd by Two or more	1st	100
300 Small Pc'd by Two or more	2nd	50
300 Small Pc'd by Two or more	3rd	25
300 Small Pc'd by Two or more	HM	
300 Small Pc'd by Two or more	HM	
400 Medium Pc'd by One	1st	100
400 Medium Pc'd by One	2nd	50
400 Medium Pc'd by One	3rd	25
400 Medium Pc'd by One	HM	
400 Medium Pc'd by One	HM	
500 Medium Pc'd by Two or More	1st	100
500 Medium Pc'd by Two or More	2nd	50
500 Medium Pc'd by Two or More	3rd	25
500 Medium Pc'd by Two or More	HM	
500 Medium Pc'd by Two or More	HM	
600 Large Pc'd by One	1st	100
600 Large Pc'd by One	2nd	50
600 Large Pc'd by One	3rd	25
600 Large Pc'd by One	HM	
600 Large Pc'd by One	HM	
700 Large Pc'd by Two or More	1st	100
700 Large Pc'd by Two or More	2nd	50
700 Large Pc'd by Two or More	3rd	25
700 Large Pc'd by Two or More	HM	
700 Large Pc'd by Two or More	HM	
800 Applique by One Large	1st	100
800 Applique by One Large	2nd	50
800 Applique by One Large	3rd	25
800 Applique by One Large	HM	
800 Applique by One Large	HM	
900 Applique by One Small	1st	100
900 Applique by One Small	2nd	50
900 Applique by One Small	3rd	25
900 Applique by One Small	HM	
900 Applique by One Small	HM	
1000 Applique by Two or More Large	1st	100
1000 Applique by Two or More Large	2nd	50
1000 Applique by Two or More Large	3rd	25
1000 Applique by Two or More Large	HM	
1000 Applique by Two or More Large	HM	
1100 Applique by Two or More Small	1st	100
1100 Applique by Two or More Small	2nd	50
1100 Applique by Two or More Small	3rd	25
1100 Applique by Two or More Small	HM	
1100 Applique by Two or More Small	HM	
1200 Mixed Technique by One Large	1st	100
1200 Mixed Technique by One Large	2nd	50
1200 Mixed Technique by One Large	3rd	25
1200 Mixed Technique by One Large	HM	
1200 Mixed Technique by One Large	HM	
1300 Mixed Technique by One Small	1st	100
1300 Mixed Technique by One Small	2nd	50
1300 Mixed Technique by One Small	3rd	25
1300 Mixed Technique by One Small	HM	
1300 Mixed Technique by One Small	HM	
1400 Mixed Technique by Two or More Lg	1st	100
1400 Mixed Technique by Two or More Lg	2nd	50
1400 Mixed Technique by Two or More Lg	3rd	25
1400 Mixed Technique by Two or More Lg	HM	
1400 Mixed Technique by Two or More Lg	HM	
1500 Mixed Technique by Two or More Sm	1st	100
1500 Mixed Technique by Two or More Sm	2nd	50
1500 Mixed Technique by Two or More Sm	3rd	25
1500 Mixed Technique by Two or More Sm	HM	
1500 Mixed Technique by Two or More Sm	HM	
1600 Miniature by One	1st	100
1600 Miniature by One	2nd	50
1600 Miniature by One	3rd	25
1600 Miniature by One	HM	
1600 Miniature by One	HM	



## The Quilt Show is BBQ's biggest fundraiser every year!

If we have businesses or individuals or families sponsor prizes, it decreases the cost of the show for the guild. We can all pitch in and **talk to any businesses that you visit** about sponsoring one of the awards at our Quilt Show. (First come, first served!)



All sponsors are identified with signs beside the winning quilt that they sponsored the award for.



There are sponsorship opportunities at all price points. All of our quilt awards can be sponsored, \$25, \$50, or \$100 in each judged category.



Or items can be donated to be used for Door Prizes, silent auction, or to be used for special prizes.



There is advertising space in the Gazette for the show itself.

1700 Modern by One or More	1st	100
1700 Modern by One or More	2nd	50
1700 Modern by One or More	3rd	25
1700 Modern by One or More	HM	
1700 Modern by One or More	HM	
1800 Art by One or More	1st	100
1800 Art by One or More	2nd	50
1800 Art by One or More	3rd	25
1800 Art by One or More	HM	
1800 Art by One or More	HM	
1900 Other Techniques by One or More	1st	100
1900 Other Techniques by One or More	2nd	50
1900 Other Techniques by One or More	3rd	25
1900 Other Techniques by One or More	HM	
1900 Other Techniques by One or More	HM	
2000 First Time Exhibitor	1st	100
2000 First Time Exhibitor	2nd	50
2000 First Time Exhibitor	3rd	25
2000 First Time Exhibitor	HM	
2000 First Time Exhibitor	HM	
2100 Youth	1st	100
2100 Youth	2nd	50
2100 Youth	3rd	25
2100 Youth	HM	
2100 Youth	HM	

Know of someone who might want to sponsor an award?

Contact us!

[quiltshow@boisebasingquilters.org](mailto:quiltshow@boisebasingquilters.org)





Our Ruby Jubilee Raffle Quilt is making the rounds. It has been at two stores during the Treasure Shop Hop, and at The Quilt, Craft, and Sewing Festival at the Expo. Thank you to everyone who helped sell raffle tickets at these events. They were a lot of fun, getting to talk to visitors about the Boise Basin Quilters and getting to spend time with other guild members.

The Raffle Quilt is making a visit to The Emmett Valley of Plenty Quilter's meeting this month, and to the Rug Hookers Show at the Riverside Hotel on July 7th. If you have an upcoming Small Group meeting or sew day, a Retreat coming up, or any other event that you would like to sell raffle tickets at, you can check out raffle tickets and the "Spoon Flower" Raffle Quilt. That is the replica of the Raffle Quilt, but it only measures about 21" x 21". Let me know if you have an upcoming event you would like to share the opportunity with others to purchase raffle tickets and have a chance to win our beautiful Raffle Quilt. Call me, Jennifer Price, 951-532-9138, to arrange to check out the mini quilt and raffle tickets.

## TAKE NOTE!

**The next Quilt Show Meeting will be July 27, 2023, at the Boise Church of Christ (where our Guild member meetings are held). No meeting in June.**

If you are interested in helping with planning or just learning about our Quilt Show in September (29th and 30th), you are welcome to join us at the July meeting. You can currently sign up to volunteer at our Quilt Show and choose what kind of job sounds fun to you. The volunteer sign up is separated by areas and duties. The sooner you sign up for when you can volunteer, the better chance of having more volunteer opportunities to choose from.



**Designed and created by  
Stitchin' Sisters of Nampa**  
with exceptional quilting by  
Guild member LaWanda  
Richardson, it represents  
Idaho and is the perfect Raffle  
Quilt to celebrate  
Boise Basin Quilters  
Ruby Jubilee.

**Raffle tickets will be for  
sale at the June Guild  
Meeting.** \$2.00 for one,  
\$5.00 for three. Same price  
as last year (you can't say that  
about many items these  
days.) We will start needing a  
volunteer or two to help sell  
raffle tickets before meetings  
and at the breakouts.

**Stop by if you  
want to help!**



## SCHOOLHOUSE IS ON SUMMER BREAK!

We'll return in the fall with these two classes:

October 21

**Crumb Quilts**  
by Terry Curry



November 18

**Big Stitch Quilting**  
by Janice Black



If you're looking for something interesting to try over the summer, you might want to check out:

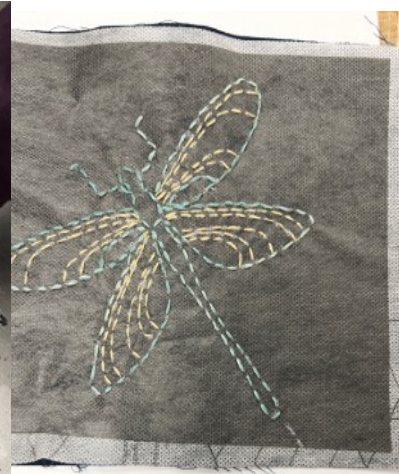
Our Member-Designed Free Patterns, available free to members on our website [here](#).

Click [here](#) to learn about Broderie Perse in this free video created by Janice Black.



**Barbara Derby** recently shared the exciting moment when she washed away the stabilizer from the block that she started during **Bernie Allen's Sashiko Schoolhouse Class** (below). Bernie's class, recorded during Covid, is still available for purchase and download.

To access this class, please send a \$15 payment to the BBQ treasurer at [treasurer@boisebasinquilters.org](mailto:treasurer@boisebasinquilters.org) through Paypal or mail a check made out to BBQ (not Schoolhouse) to Boise Basin Quilters, P.O. Box 4434, Boise, ID 83711, being sure to note what you are paying for and to include your preferred email address.



## Schoolhouse Needs Your Help!

During the summer is when we'll be working on planning next year's Schoolhouse classes. If you'd like to be a part of that or to be involved in Schoolhouse in other ways (such as by volunteering at the Schoolhouse table at guild meetings, or serving as a helper during upcoming classes), please contact [Schoolhouse@boisebasinquilters.org](mailto:Schoolhouse@boisebasinquilters.org) to let us know that you'd like to join the Schoolhouse committee! We also welcome suggestions from our members about potential class topics that you'd be interested in taking . . . or teaching!

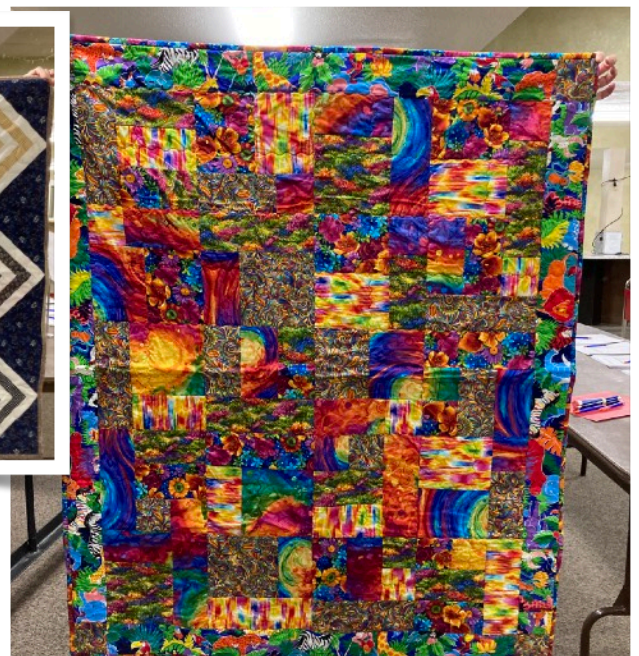


# Quilts for Kids



In the absence of a chair person, Quilts for Kids is still trying to meet the request from membership to create and donate quilts for children in need in our local area. At our membership meetings, nearly half of the piecing kits and almost all of the quilting kits are taken home, in addition to a beautiful stack of completed quilts being gathered.

We are so thankful for the generosity of time and skill being given to Quilts for Kids. If you are interested in chairing the committee, please contact [president@boisebasinquilters.org](mailto:president@boisebasinquilters.org) to discuss.







Does this speak to your heart?

## Special Projects Needs a Committee Chair

Special Projects is a subcommittee under Community Education and Outreach. **We are in need of a Committee Chair for this very worthwhile part of our guild.**

Remember, the directions for all the Special Projects are on the BBQ website, under Community Outreach, Special Projects. OR click on the links to the right to find all the information needed to create the projects.

We are incredibly appreciative and humbled by the efforts of all the members of Boise Basin Quilters and your commitment, dedication and generosity. **We look forward to someone stepping forward to fill the Committee Chair position. Thank you!**

**Volunteer your time and energy  
and keep this going.**

**Thank you!**

**Please contact:**

**[membership@boisebasinquilters.org](mailto:membership@boisebasinquilters.org)**

## PROJECT PATTERNS

Click on links below. Create to your heart's content and bring to the next meeting!



### CASES FOR SMILES



### Blue Star Mothers Christmas Stockings



### PORT-A-CATH



### PRETTY POCKETS



### CHEMO CAPS





## Facebook

Find the **BBQ Members** page here:

[https://www.facebook.com/groups/  
www.boisebasinquilters.org](https://www.facebook.com/groups/www.boisebasinquilters.org)

The BBQ Members Facebook page is a private page exclusively for Guild members now includes more than half our membership at 155 followers since the last report. There are usually around 35 posts each month as well as reminders for meetings and Guild activities.

The FB group page is a daily Show & Tell – just show it to share it! And you can easily see ALL the inspirational photos by clicking on “Media.” And remember there are free patterns in the “Files” as well as some favorite quilting tips and tricks. Any member can post to the page as long as the post is related to the quilting arts. Have a question? Ask a member! Found a great quilt book? Have a favorite tip, trick, or tool? Share it! What are your goals for summer sewing? Tell us!

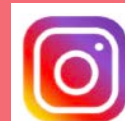
If you are a member of the Guild and have not yet found us, please submit a request to be added to the group (your active membership will be verified). Information about Guild meetings, activities, and news is shared here; and it's a great way to stay in touch with each other, find a little humor, discover quilt patterns in the Files, and view amazing photos of quilts for inspiration.

Just no advertising, please, unless it will benefit the Guild financially (all advertising requires admin approval). If you have something to sell or advertise, please consider placing an ad in the Newsletter which reaches a much wider audience (1,500+ recipients) and the ad cost benefits our Guild! This is a gentle reminder to all members to review other “Group Rules” that ensure the integrity of the page.

Want to become a member of the Guild and join the BBQ FB page? Go to the website – it's the best value anywhere:

<https://www.boisebasinquilters.org/about-us/membership-enrollment/>

Instagram



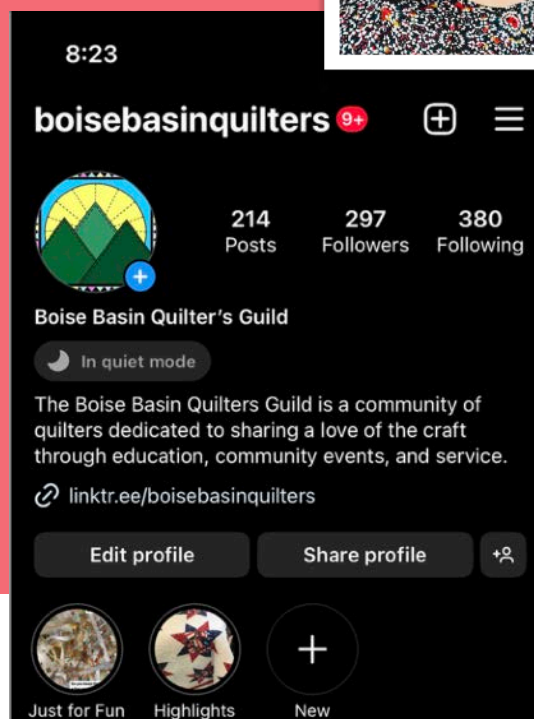
## Howdy Guild Members and Friends of the Guild!

**Quiltstagram** is going strong with almost 300 followers! This coming month we will be highlighting different quilting techniques favored by our guild members and we are so excited to show off your talents.

If you would like to chat about your favorite technique or have one of your quilts featured, send me an email or give me a call. The more the merrier when showing off our talents.

May your points always line up my friends!

Would you like to join Instagram? Talk to Brice McLaughlin at the next BBQ meeting. She would love to help you get set up and teach you to utilize the platform in an enjoyable and safe way.



Want to become a member of the Guild and join the BBQ FB page? Go to the website – it's the best value anywhere: <https://www.boisebasinquilters.org/about-us/membership-enrollment/>

## Celebrating our Ruby Jubilee history!

Enterprising group of women create a legacy of creativity, service, and companionship.



**April 1982** Six of the original eight founding BBQ members on a quilt show road trip, of which there were many. Left to Right: **Peggi Anderson Laubenhiem; Linda Dixon, Jacque Riddlemoser, Cheryl Little, Cherry Partee, Billie Mahorney.** Not pictured: **Jo Inzer and Mihoko Tsong**



**By Cheryl Little**  
**Charter Member**  
**First Chair/President**  
**1983-1984**

Two people, one, an avid embroidery person, Linda Dixon and Jo Inzer Smith, a quilter who recently moved here from California met at a wonderful stitchery shop in Belgravia in downtown Boise (5th and Main - SW corner). Linda wanted to start a chapter of the Embroiderers Guild of America and Jo wanted to belong to a quilt guild like she belonged to in Southern CA. Jo was already attending national quilt conferences. Linda said, "Jo if you help me start an Embroidery Guild, I will then help you start a quilt guild."

About a year later, in 1979, with IGA underway, I was taking a beginning quilting class from Jacque

Riddlemoser at her home. At the time we did not have a quilt shop in Boise, but very nice locally owned fabric stores. I had recently sold The Window Box, my plant and macrame shop in Meridian, and home and moved to Boise's North End into a 90+ year old house to focus on the gift shop opened a year prior in Old Boise, Mother Hubbards Cupboard. Also, my husband and I had purchased a brass bed which seemed to cry for a quilt. I wanted one, but could I live long enough to complete it? At one of my last classes with Jacque, she announced she was soon attending a gathering of quilt enthusiasts in the Boise Highlands and wondered if

## 1983

### AROUND A QUILT FRAME AT CHERYL LITTLE'S

Left to Right: **Billie Mahorney, Jacque Riddlemoser, Linda Dixon, Mihoko Tsong and Peggi Anderson Laubenheim.**

Not Pictured: **Jo Inzer and Cheryl Little,** photographer.





anyone in class would like to attend. I thought it was so close to where I lived I should attend and Jacque volunteered to pick me up, thus we went.

At that meeting it was determined that a quilt guild would form as a part of Embroiderers of America (EGA), thus avoiding all the paperwork associated with starting a separate organization. We paid our membership fees to EGA and \$7.00 of the \$12.00 went to the National organization. Our quilt group of about 16 met in our homes and became known as Quilt Gems. Jo Inzer Smith and Jacque Riddlemoser were the most knowledgeable quilters and assigned us all to research and present programs at our monthly gatherings on the 3rd Tuesdays. I remember being assigned batting... about which I had no idea there was so much to know and consider. It was all a bit intimidating, especially the idea I would ever make a full sized hand pieced, hand quilted quilt. At that time (late 70's), as quilter's the only thing we used our sewing machines for was to sew the quilt together and add the first step of the binding. Because the walking foot had not yet been invented, even machine sewing the binding was time-consuming. We had to baste it first or it would ripple ... heaven forbid.

I joined the group because, one, they were a fun group of women to spend time with and they were going to make a quilt to raffle, raising money to have a quilt show. I was especially attracted to the



**First quilt started in 1982 and finished 2005.** Three members were there from the start to the finish. Left to Right: **Cheryl Little, Linda Dixon, and Jacque Riddlemoser.**

idea of making a raffle quilt. If I could actually see a quilt go together to completion and, then, perhaps I would have the confidence to attack one on my own.

As time progressed, I could see, even more than making a quilt, how with a quilt show we could raise awareness in our community to the many values of a quilt, hoping they would then be treasures to be inherited, rather than sold at garage sales. That became important to all of us.

It was not enough for Jo Inzer. In January of 1981, I was one of a group of 6 women invited to lunch at Jo Inzer's house to discuss ways we might all have quilts

## JO INZER SMITH

Jo Inzer at a quilt frame from 1982 ... it was our first quilt (1982) in a full-out frame and the last of many to be finished (2005). When Jo was sick in 2005 with a terminal cancer, Linda Dixon rescued the quilt and made sure it got finished before Jo passed.

finished in time for our first show. We soon added an 8th member! By the time lunch was over, a plan had been hatched to that end. Every two weeks, we made blocks for one of us which got us going on our quilt.

Once the quilt top was ready, we would gather at a home, put it on a frame, return 2-3 more times to make some progress and, within the year, we all had quilts at home to work on both on our own and individually. We made our goal of all having finished quilts for the 1983 quilt show and I had a quilt for the brass bed!

Jo Inzer's young and very active twin boys called us "Mom's Quilters" and it stuck. Our small group has lost and added new members and overall doesn't quilt as much or the same as it once did 40+ years ago. But, as of March, 2023, there are 11 of us meeting once each month on First Thursday, sharing our lives and projects. Over the years our small group has lost and added new members. We don't quilt the same as we did 40+ years ago, but we still meet sharing our lives and projects.

Following the Spring of 1983 EGA/Quilt Gems Quilt show, the quilt group broke away and started Boise Basin Quilters. The first order of business was again, to make a quilt and raffle it off in order to raise funds for a quilt show. Boise Basin Quilters' first quilt show was "Pieces Lives: Quilts 1986".

A big part of our charter was to bring awareness of quilting to the Treasure Valley. We showed quilts in many public places including the Capitol Building and invited nationally known quilters to Boise to teach and lecture and promoted those lectures to the public. We made quilts to commemorate the major events, such as the National Governors Conference when held in Boise. And, we held Ada County documentation days followed by a show in 1990 featuring the many special quilts that were uncovered in the process. Those files are now housed at the Idaho State Historical Society.



### Mom's Quilters' Christmas 2022

These are members now gathering once each month. Left to right: **FRONT ROW:** Marilyn Dorman, Jill Beaman, current BBQ member; Linda Dixon, Charter BBQ Member, active member; **BACK ROW:** Cheryl Little, Charter BBQ Member, past Chair, active BBQ member; Kathy Quinn, Charter BBQ Member, past Chair; Donna Anderson, past Chair; Ann Swanson, current member; DuAnn Wright, joined BBQ 1984, current member; Pam Jones, Charter BBQ Member; and Chris Walter, Charter BBQ Member. (3 Past Chairs and 5 Charter BBQ Members) **Not pictured:** Jacque Riddlemoser, Charter BBQ Member.



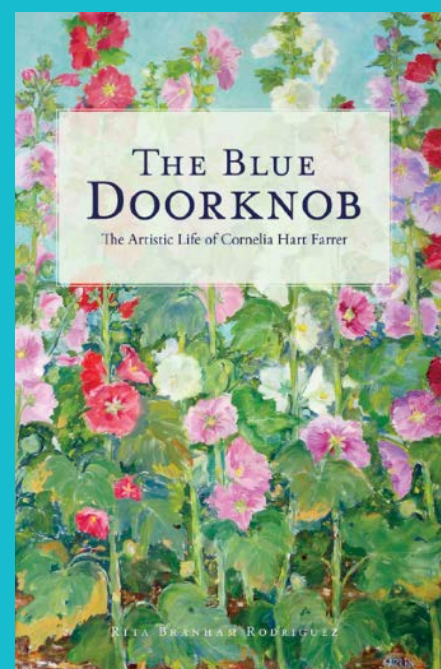
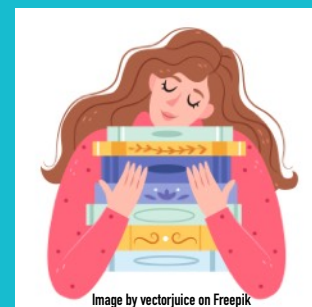
## Book-to-Quilt Small Group

The Stories to Stitches Small Group held its first meeting on May 25. This book-to-quilt group selected its name along with selecting our first book: The Blue Doorknob: The Artistic Life of Cornelia Hart Farrer by Rita Branham Rodriguez. We felt this was a great “first” book for us because it’s a biography of the woman who was instrumental in creating the Boise Art Museum and Art in the Park.

Members will use the book as inspiration for creating quilts.

The group will be meeting on the 4<sup>th</sup> Thursdays from 1-3 pm. Our next meeting will be on June 22 in the 3<sup>rd</sup> Floor Boardroom at the Nampa Public Library where we will be discussing our book.

If you are interested in joining us, please contact Dianne Kane. You’ll find her contact information in the Member Directory.



## SMALL GROUPS

### Stitchin’ Sisters of Nampa

Contact: Lois Alice or [SSoNampa@gmail.com](mailto:SSoNampa@gmail.com)

Email for location information

Meetings: First & Third Fridays; 9:00 – 4:00  
(open sew days)

Focus: Personal projects; quilts for Canyon County children in foster care; socializing; sharing.

### Star Library Quilter’s Group

Contact: Kathy England

### Treasure Valley Applique Group

Contact: Esther Kleinkauf



If you belong to a small group, even if you are no longer accepting new members, please contact Janice Atkins-Neva at [smallgroups@boisebasinquilters.org](mailto:smallgroups@boisebasinquilters.org). We hope to build a directory of all small groups with at least some shared members with Boise Basin Quilters. And if you are looking to join a small group, please let us know, we’ll do our best to help you find others with similar interests.

**Donna Swanson**

**Rock Creek Quilting**

Long Arm Quilting Services

Creative, Custom Designs

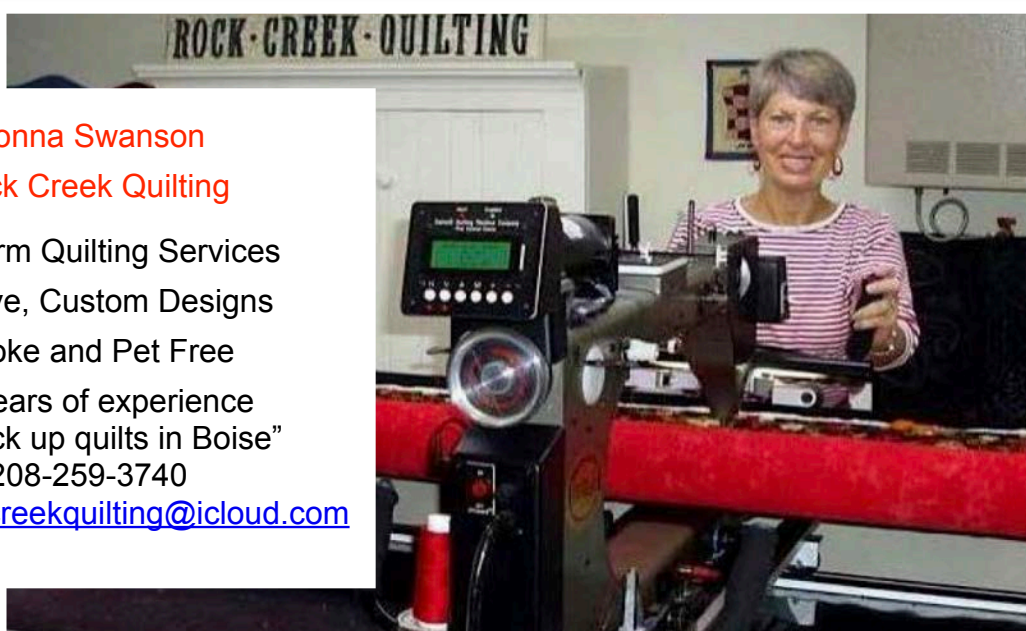
Smoke and Pet Free

20 years of experience

"Will pick up quilts in Boise"

208-259-3740

Email: [rockcreekquilting@icloud.com](mailto:rockcreekquilting@icloud.com)



## Reach our 1386 subscribers! Advertise in this Newsletter!

Size	Member	Non-Member
Quarter Page	\$10.00	\$20.00
Half page	\$20.00	\$40.00
Full Page	\$40.00	\$80.00

For submission information

Contact Vicki Francis at:

[newsletter@boisebasinquilters.org](mailto:newsletter@boisebasinquilters.org)

Submission deadline is the third Thursday of each month for the next month's publication.

**Additional cost of \$20 if we construct your ad.**

No newsletters are published in December or July.





# WE'RE HIRING

**JOIN  
OUR  
TEAM**



● 7911 W USTICK RD, BOISE ID

## MY QUILTING CORNER IS HIRING

We are looking for someone able to work 2-3 days per week.

Flexible schedule, closed on weekends.

If hired, we will train you to use our Innova Longarm to quilt for our customers.

Customer service and sewing experience is a plus.

**EMAIL US**

[QUILTSONTHECORNER@GMAIL.COM](mailto:QUILTSONTHECORNER@GMAIL.COM)

**OR CALL**

**208-336-5566**

## LONG ARM QUILTING SERVICES



**Vicki Francis Designs**

**Baby Quilts**

**3-Day Express Service**

**Vintage Quilt Tops**

**Repair and Quilting**

**208-860-0325**

**Vicki Francis** [vickannie4@gmail.com](mailto:vickannie4@gmail.com)



# HENDRICKSON'S

Call or Text us  
208-853-1615

FINE JEWELRY

5685 N GLENWOOD ST, BOISE  
(across from Hawks Baseball Stadium)

Hours:

Tues-Fri 10-6

Sat 10-5

  
**\$20 OFF**

JEWELRY REPAIR  
OVER \$50  
BRING IN A PICTURE  
OF YOUR FAVORITE  
QUILT TO QUALIFY.

All jewelry repairs done on premises.

We are

"The Ones That Do The Work"

WITH COUPON, CANNOT BE COMBINED. NOT VALID WITH ANY OTHER DISCOUNTS.

Wedding Ring vintage quilt made by Hannah Turner 1925-1935



**TREASURE VALLEY RUG HOOKERS  
ARE EXCITED TO PRESENT  
THE GOLDEN AGE OF ILLUSTRATED FAIRY TALES**

*There is something to love, hate, think and laugh about for anyone who is, or was once, a child.*



**JOIN TREASURE VALLEY RUG HOOKERS**

July 7, 2023 10:00 a.m. till 7:00 p.m.

Closing Reception at 7:00 p.m.

**\$5.00 suggested donation for entrance, which includes  
the Closing Reception**

**Presentation on the History of the Golden Age of Fairy Tales**

**Riverside Hotel, 2900 West Chinden Blvd.,  
Garden City, ID 83714**

**THE SHOW INCLUDES:**

**The Fairy Tale Show rugs hooked by  
certified McGown Rug Hooking Teachers**

**Have-a-Go stations to try your hand at rug hooking.**

**Begining and Advanced Rug Hooking Classes  
held July 8, 9:00 a.m. - 4:00 p.m.**

**Preregistration by May 15**

**For information contact Contact:**

**Susan Elcox 208-229-3319 [newworldhooking@msn.com](mailto:newworldhooking@msn.com)**

**HoneyBee Hive Rug Hooking will be vending.  
Gallery Walk & Talk**

**THE GOLDEN AGE OF ILLUSTRATED FAIRY TALES SHOW**

**Sponsored by The Pearl K. McGown Rughookrafters Guild**

Are you traveling? Moving? Just moved here and missing your other guild?

## Check out other Northwest Guilds!

### BBQ GUILD FUNDING RAISING OPPORTUNITY



**BBQ is a Fred Meyer Rewards**

**Community Partner**

BBQ is a registered Community Partner with the Fred Meyer Rewards program. Fred Meyer will donate cash to us quarterly, based on the \$\$ spent by Rewards Members who link their Rewards card to BBQ and **you keep** all of the Rewards points you earn. Being a Rewards member is free and is as easy as showing your key ring fob or card whenever you shop at a Fred Meyer store or gas station.

**Here's what you do:** Get a Fred Meyer Rewards card at any Fred Meyer register or customer service desk.

Sign in to Fred Meyer Rewards:

<https://www.fredmeyer.com/signin?redirectUrl=/account/communityrewards/enroll>

Click the link at the bottom of the page to "Create an Account"

You'll need your Fred Meyer Rewards card number to create an account. Enter BBQ's Community Partner ID number **CW389** and click the "Search" button. Click the "circle" next to BBQ as the Organization Name. Click "Enroll".

Present your card whenever you shop in a Fred Meyer store or gas station. You'll be rewarded with discounts, special prices and offers, and you'll be helping BBQ promote the quilting arts and skills in our community...and beyond.

Watch video [HERE](#) for instructions on how to register.

Then click [HERE](#) to register!

### 39TH ANNUAL QUILT SHOW

#### 2023 Valley of Plenty Quilt Show

**Admission:** \$5 per person  
children under 12 are FREE

**Location:**

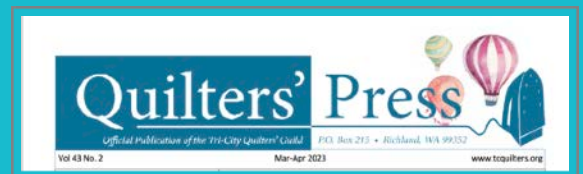
Emmett Church of the Nazarene  
1144 N. Washington Ave.  
Emmett, ID 83617

**June 14-17, 2023**



**Contact Information:**

Lynett Goodwin  
(530) 917-0024



**Click [here](#) for latest  
Tri-City Quilter's Guild  
Newsletter!**

Palouse Patchers

MOSCOW, IDAHO



**Go to [www.palousepatchers.org](http://www.palousepatchers.org)  
For their latest newsletter.**